

Gen1 F-Series B58 / B48 Flex Fuel Kit Installation Instructions

The following video of the S55/N55 Flex Fuel kit installation is a great starting point in installing your Gen1 F-series B58 / B48 Flex Fuel Kit. ***up until 11th minute***. At that point skip to next section below, BM3 Flex Fuel Controller connection to BDC (FEM).

https://www.youtube.com/watch?v=lvYHQIIF1-g&ab_channel=KiesMotorsports

IMPORTANT: BM3 Flex Fuel controller connection to BDC (FEM)

**** This controller does not connect to the EKP like the N55 / S55 kit ****

Place the BM3 Flex Fuel Controller box somewhere nicely behind the Fuel Controller, usually on a piece of Velcro and secure to car's body panel. This picture shows it on Velcro on the left side.

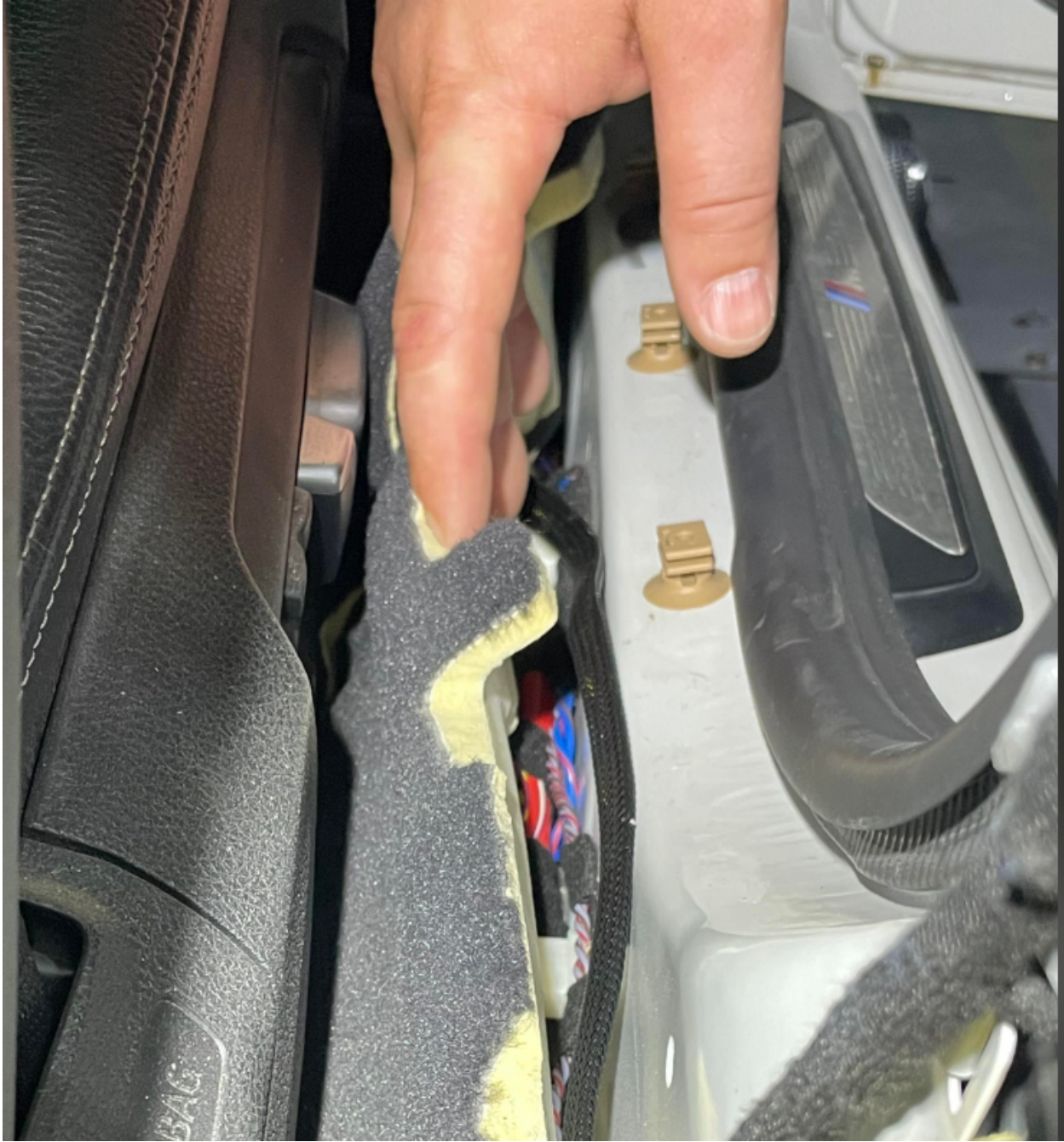


The only difference in this case is that the long harness is now being routed to the passenger side footwell area to the vehicle's FEM (BDC) unit.

Route the long part of the BM3 FlexFuel Kit harness from the BM3 controller down the side of the bolster area under the plastic trim along the back and then the front door openings.

You can pull the plastic trim up and the harness can be placed between the carpet and the plastic trim.

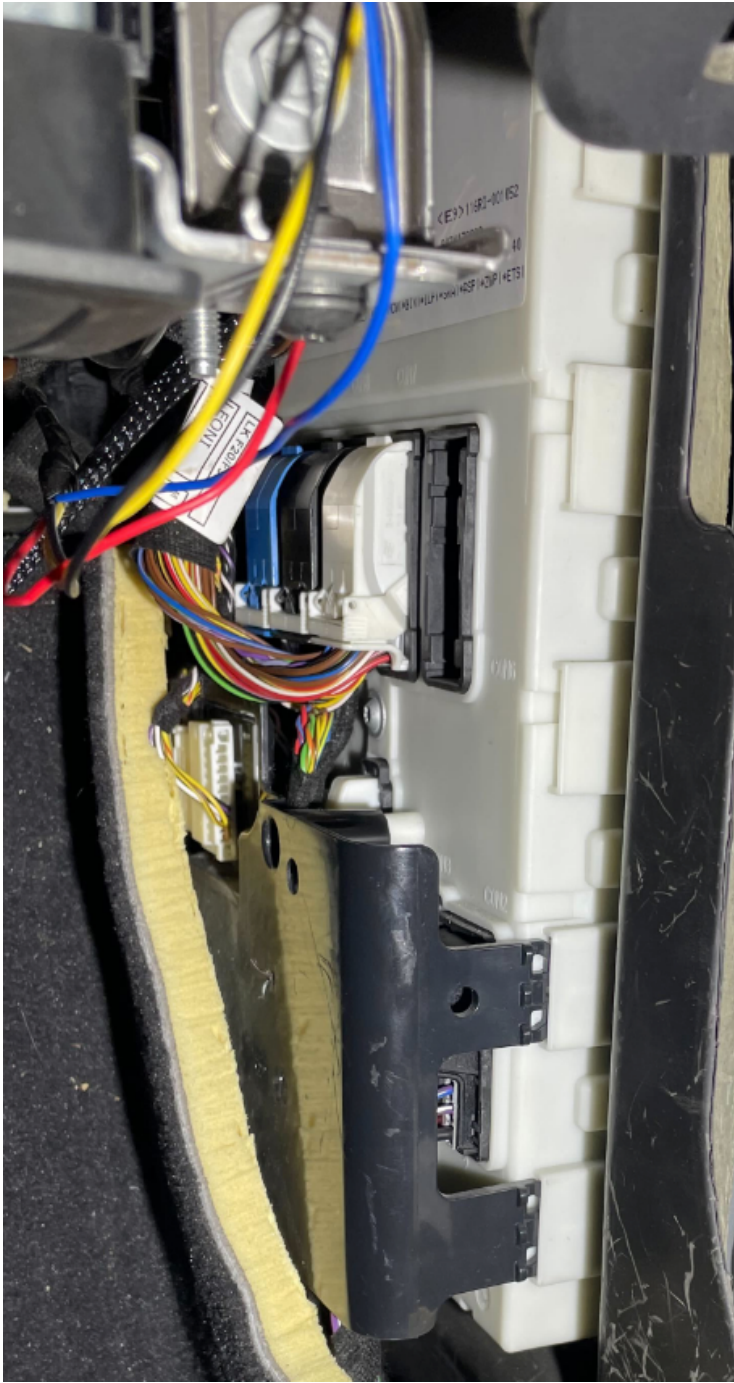




Harness is being routed to this area where the BDC (FEM) unit is located:



In the top row of connectors, second connector from the right marked with CON7 (white) is the one to unplug and we'll be unplugging the larger sub-connector from it.



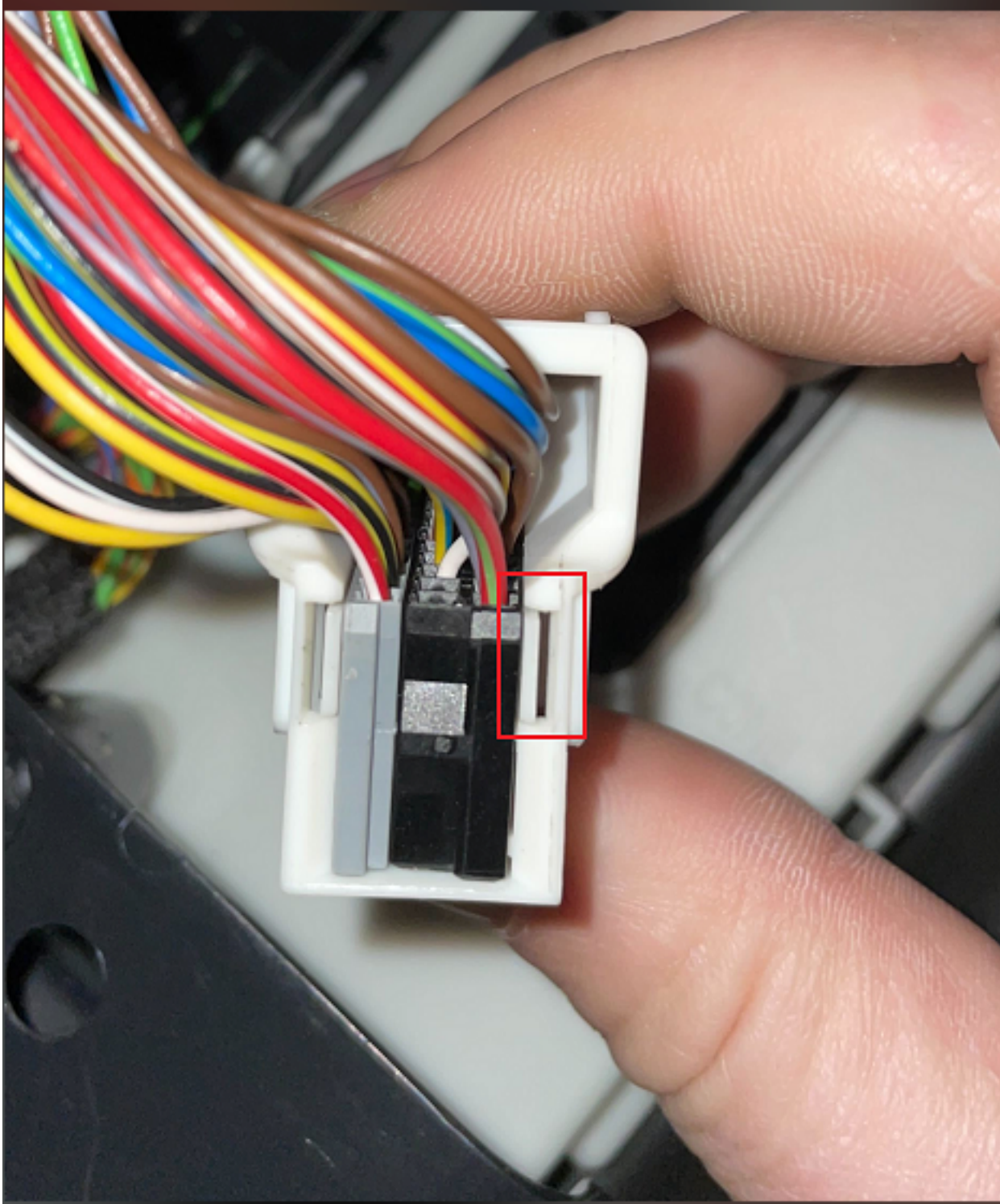
LEONI
MEG8A
LK F20/F30

9387200
58M617F10 15 252 8074178993
FEM-LR01-ZB7-HIGH_CA HW:D8.3 SW:14.10
I_ELVI*CEI*NCWI*BIXI*ILPI*SRAI*ASPI*ZWP I

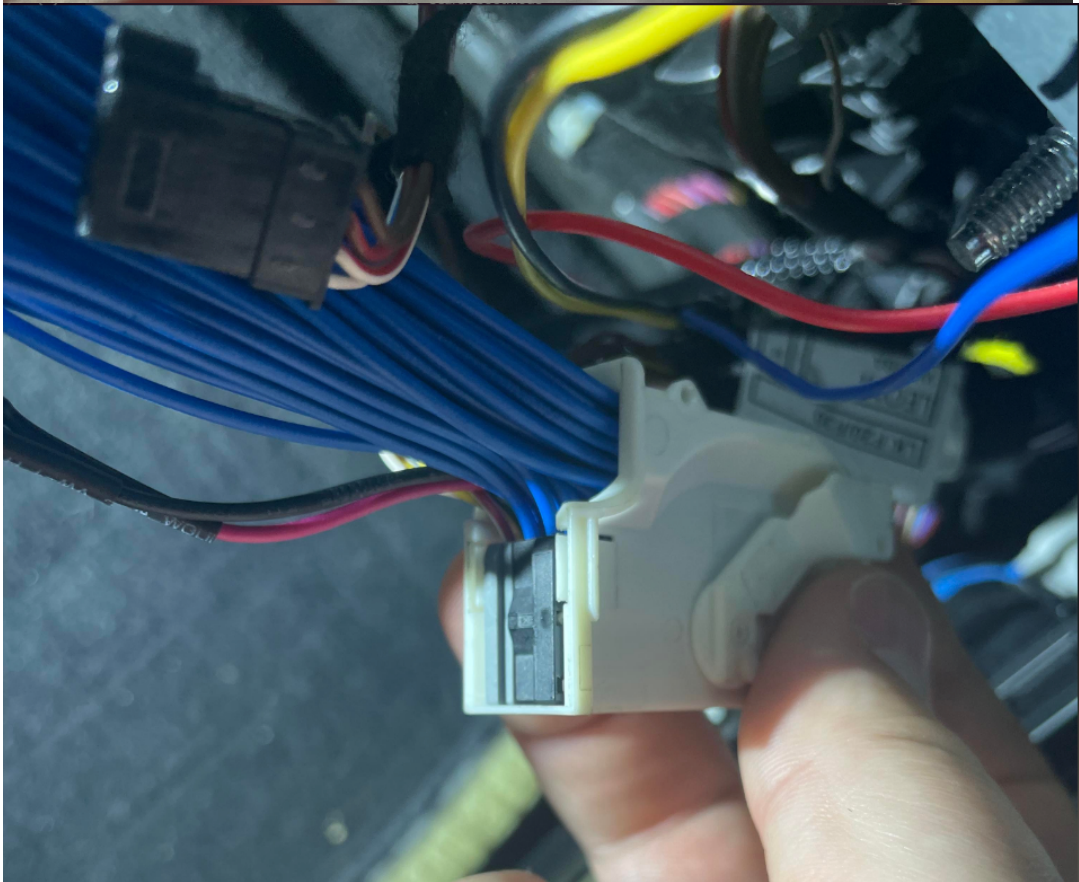


COM

Unplug it and pull out the black sub-connector by pushing the small tab on the right outwards and pulling the black sub-connector out.



Insert the blue harness connector in place of the OEM black sub-connector:



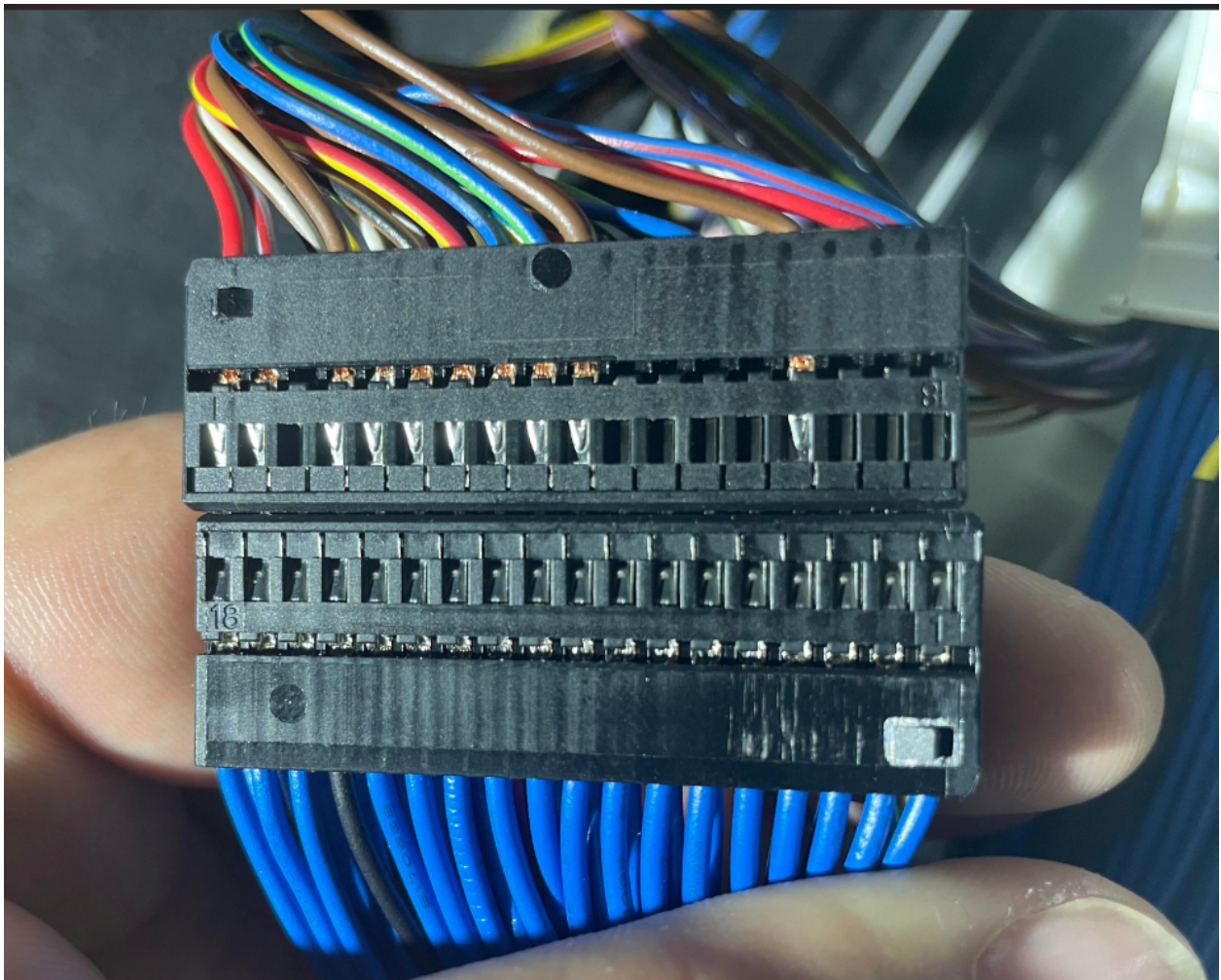
Slide the large white connector back into the BDC (FEM) CON7 location and ensure it is locked back into place with its latch as shown in picture below.

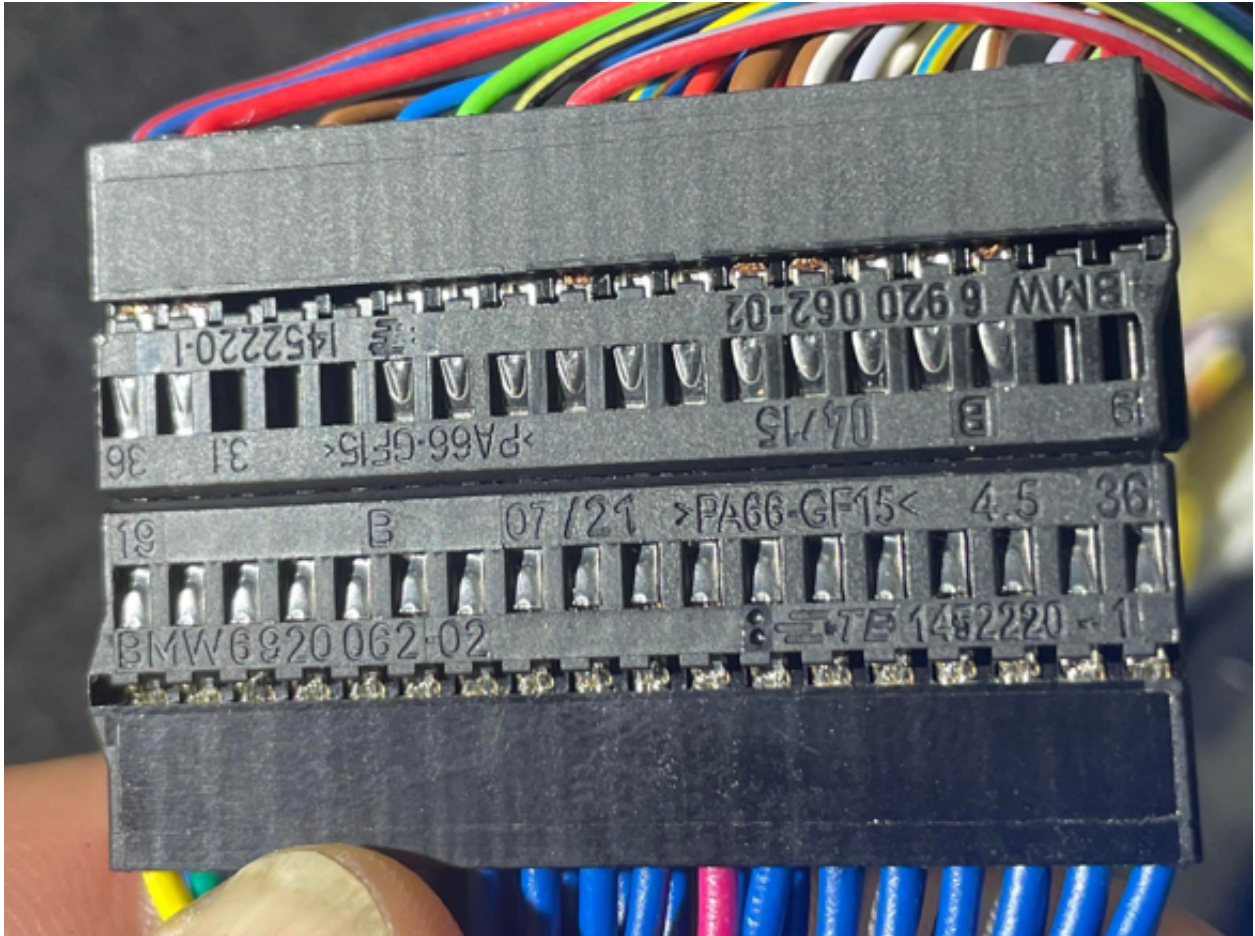


Connect the other side of the blue BM3 harness to the OEM black sub-connector as shown in picture below.

Ensure pin1 on the blue harness points at pin 18 on the OEM harness.

**** If incorrectly connected you will get a drivetrain malfunction and your wipers will be going off until this is corrected ****





To confirm and test everything is working, start the vehicle and check for any fuel leaks.

Provided you have a CustomROM map flashed on the vehicle already, you can pull DOWN on the Cruise Control button (1st position DOWN) and, if your gas tank has any ethanol in it, it'll show you the Ethanol % on your RPM gauge in the cluster (1000RPM = 10% ethanol, 5500rpm = 55% ethanol).

For any questions or issues please contact support@protuningfreaks.com.